

# 1725

1725 Hughes Landing Blvd  
The Woodlands, TX 77380

## CLASS A OFFICE SPACE



HUGHES LANDING  
ON LAKE WOODLANDS

The Woodlands®

*Howard Hughes*

CBRE

# PRIME LOCATION



## 13-story Class A office building with adjacent parking garage

---

Building: 339,608 RSF

---

Typical floor plate: 28,168 SF

---

Parking ratio: 3.5/1,000 SF

---

On-site conference and training center

---

Building fitness center

---

On-site café

---

Prime location overlooking 200-acre Lake Woodlands

# THE PERFECT PLACE TO GROW



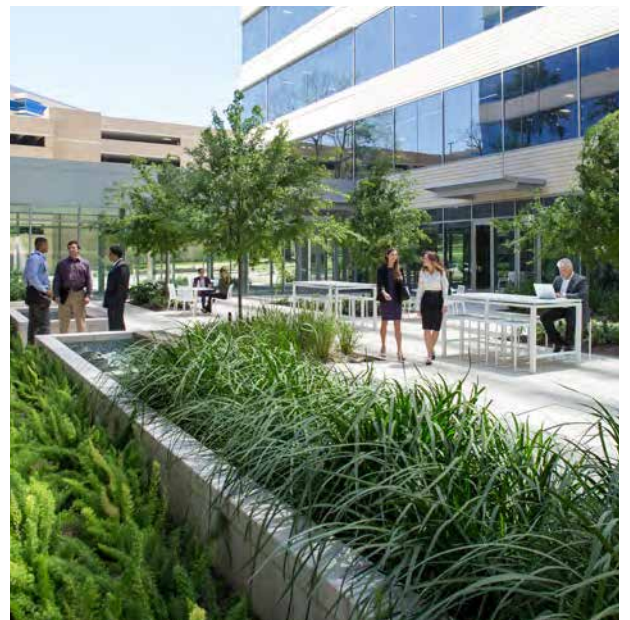
Take a stroll down the street to the Embassy Suites by Hilton, Restaurant Row, Whole Foods Market®, retail and specialty shops, Primrose School and multiple office buildings. Enjoy the outdoors with access to water sports activities and more than 200 miles of connected hike and bike trails. Surrounded by everything you need, 1725 Hughes Landing Blvd. is the perfect place to grow your business.

Notable Tenants:

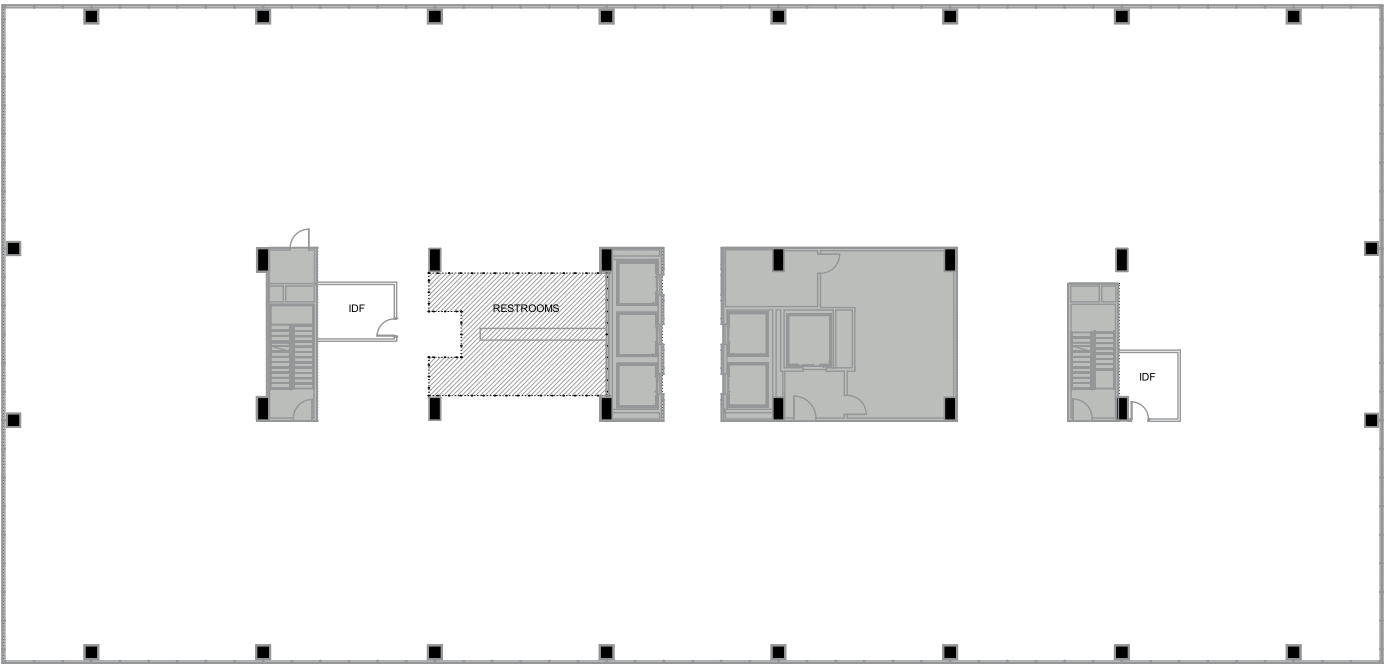
Baylor  
College of  
Medicine



SPACES. webber



# FLOOR PLATE

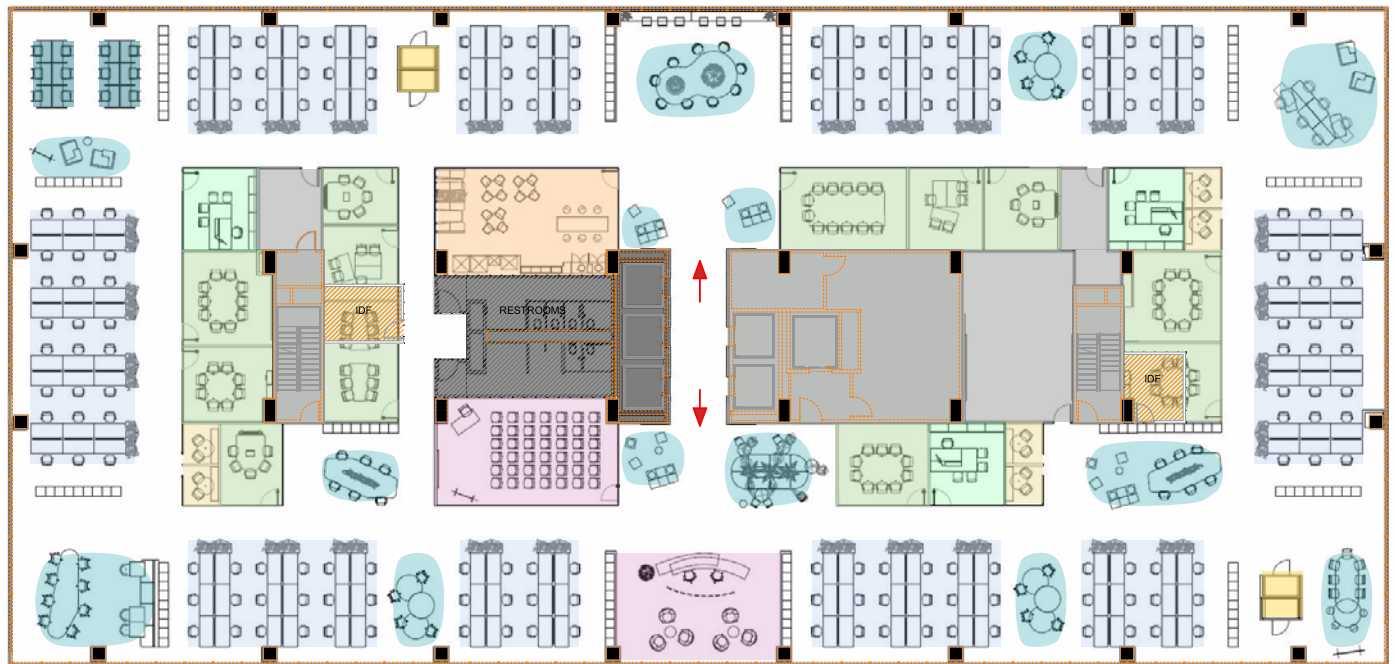


## Floor Plate

28,242 SF

# SAMPLE TEST FITS

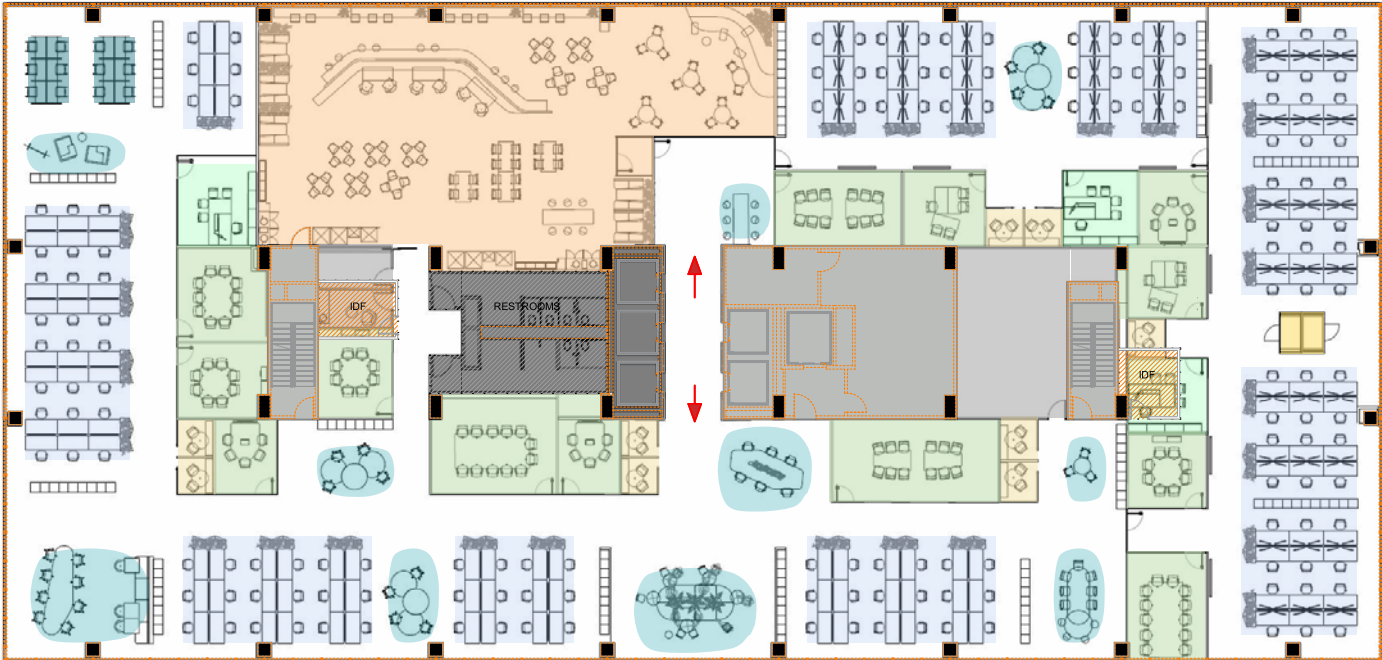
±85K SF  
Opportunity on  
Floors 3-5



## 3rd Floor Plan

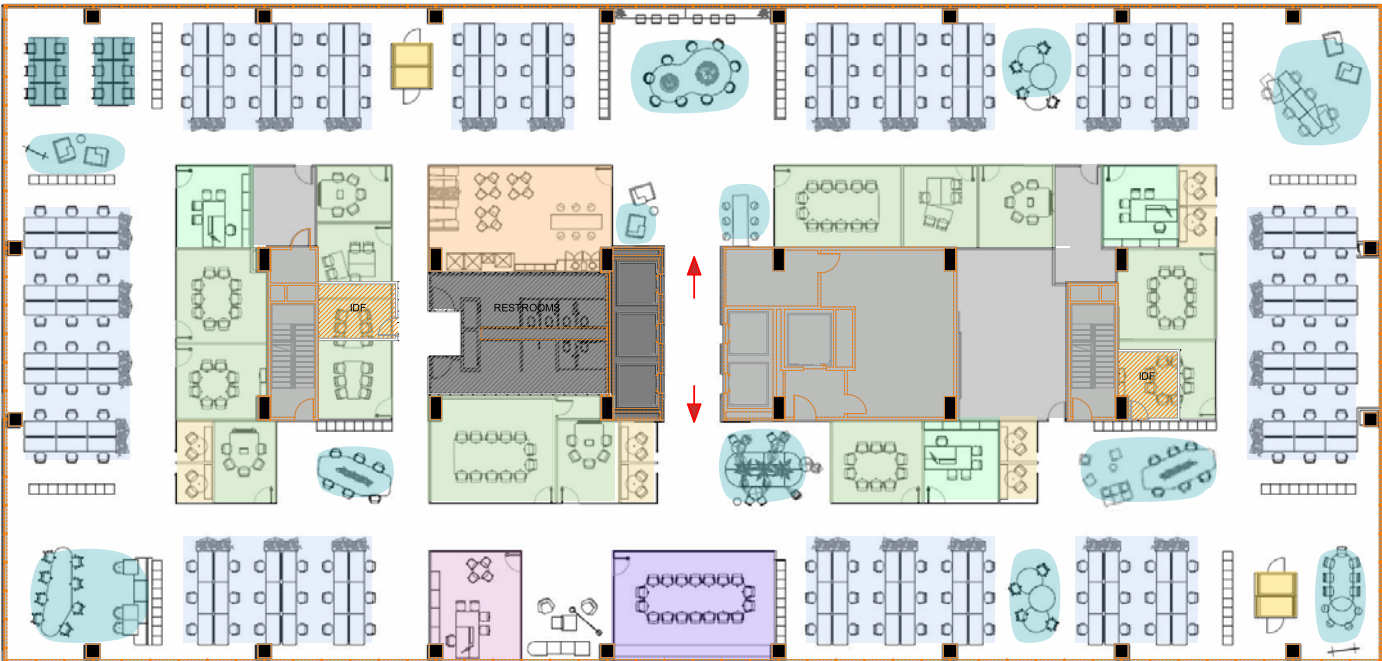
28,242 SF

# SAMPLE TEST FITS



## 4th Floor Plan

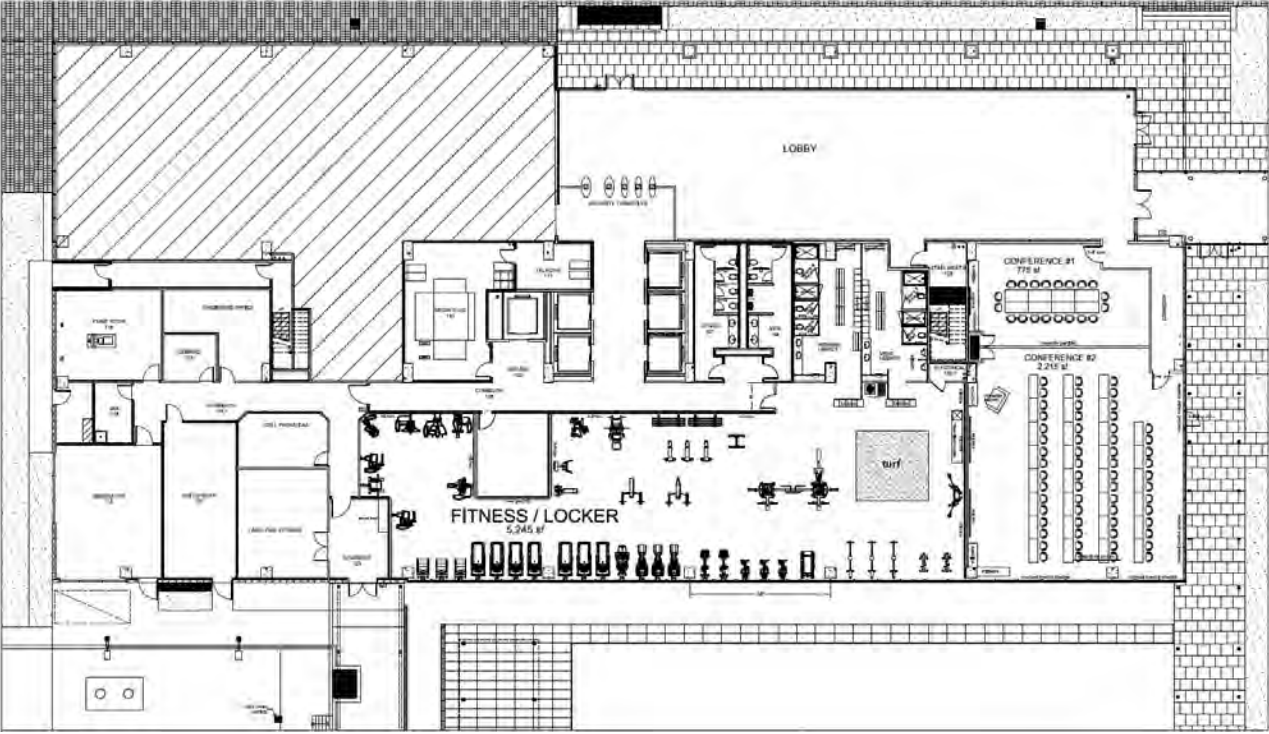
28,242 SF



## 5th Floor Plan

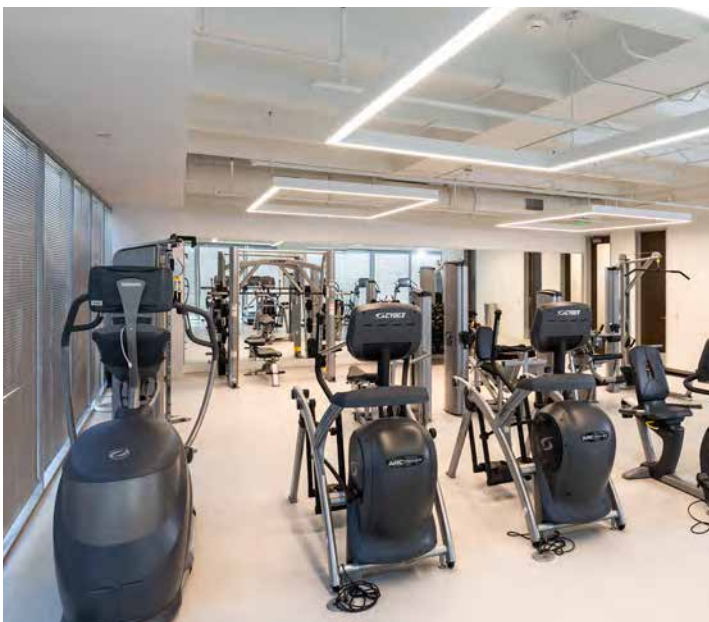
28,242 SF

# NEW FITNESS AND CONFERENCE CENTER COMING SOON



## SPACES.

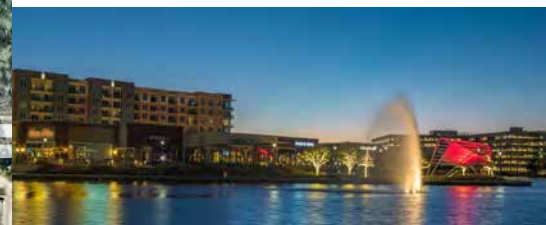
Onsite co-working floor for rapid expansion or special project needs



# EXPERIENCE HUGHES LANDING



- Curated mix of elevated dining options at **Restaurant Row**
- **Premium shopping** featuring Whole Foods Market and other sought-after retailers
- **Lakefront multifamily and corporate housing** at One and Two Lakes Edge
- Home to **The Ritz-Carlton Residences**, The Woodlands
- **Embassy Suites by Hilton The Woodlands®** at **Hughes Landing** located on-site with preferred rates for tenants



# WHY CHOOSE HOWARD HUGHES

As the visionary developer of The Woodlands, Howard Hughes delivers more than premier office space – they create vibrant, sustainable communities where businesses thrive. With a long-term, local ownership approach, on-demand property management, and thoughtfully integrated amenities, Howard Hughes offers a commitment to quality and value.



## EXECUTIVE CLUB

### The Howard Hughes Executive Club

*An invitation-only network for tenants occupying 7,500 SF or more*

Fosters **community, innovation, and growth** among Howard Hughes business partners

---

Access to **exclusive, member-only events**

---

**Special access to amenities** across the Howard Hughes network

## HHCONNECTION

### HHConnection Concierge Program

Enhancing the workplace with **hospitality and lifestyle services**

---

**Connects companies and employees** to curated business and lifestyle resources

---

Builds community through **tenant experience programming**

#### Select services include:

- Business support and event planning
- Conference and catering coordination
- Health & wellness initiatives
- Preferred rates for hotels and corporate housing

# 1725 HUGHES LANDING



Learn more at [thewoodlands.com/commercial](https://thewoodlands.com/commercial)

**John Spafford**

john.spafford@cbre.com  
713-577-1684

**Jillian Fredericks**

jillian.fredericks@cbre.com  
713-446-3294

**Joel Douthit**

joel.douthit@cbre.com  
713-591-9492

© 2026 CBRE, Inc. All rights reserved. This information has been obtained from sources believed reliable, but has not been verified for accuracy or completeness. You should conduct a careful, independent investigation of the property and verify all information. Any reliance on this information is solely at your own risk. CBRE and the CBRE logo are service marks of CBRE, Inc. All other marks displayed on this document are the property of their respective owners, and the use of such logos does not imply any affiliation with or endorsement of CBRE. Photos herein are the property of their respective owners. Use of these images without the express written consent of the owner is prohibited.



HUGHES LANDING  
ON LAKE WOODLANDS

The Woodlands®

Howard Hughes

CBRE