

9303

NEW TRAILS DRIVE



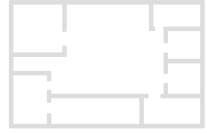
The Woodlands®

Howard Hughes



9303 New Trails Drive is a four-story office building located near several prominent retail hubs and thoroughfares in The Woodlands.

PROPERTY FEATURES



**97,964 RSF**

Four-story office building



**3.5/1,000 SF**

Uncovered parking



**BOMA 360 Certified**



**I-45 Access**

Conveniently located to I-45 and  
30 minutes north of Houston's Bush  
Intercontinental Airport



## AMENITIES



# Proximity to Major Retail Hubs

9303 New Trails Drive is located within a mile of The Woodlands Town Center and includes Hughes Landing, Waterway Square®, The Westin at The Woodlands, The Woodlands Waterway Marriott Hotel & Convention Center, The Woodlands Mall, Market Street and The Cynthia Woods Mitchell Pavilion, one of the top-rated outdoor amphitheaters in the U.S.

**645 HOTEL ROOMS**

**2 MILLION SQ FT  
OF SHOPPING & DINING**

**1,646 LUXURY  
MULTIFAMILY UNITS**

ACCESSIBILITY

# Dining & Retail Options

Find modern flavors, world-class cuisine and local favorites within Hughes Landing and plenty of options in between.

## DINING



## FITNESS



## SHOPPING AND SERVICES



## The Woodlands Town Center



NEW TRAILS DRIVE

# Leasing

**SCOTT FIKES**

scott.fikes@jll.com

713.425.5866

**JACK RUSSO**

jack.russo@jll.com

713.425.1808

Visit [TheWoodlands.com](http://TheWoodlands.com) for more leasing information and building specs.



*Howard Hughes*

The Howard Hughes Corporation owns, manages and develops commercial, residential and mixed-use real estate throughout the U.S. Its award-winning assets include the country's preeminent portfolio of master planned communities, as well as operating properties and development opportunities including: the Seaport District in New York; Columbia, Maryland; The Woodlands®, Bridgeland® and The Woodlands Hills in the Greater Houston, Texas area; Summerlin®, Las Vegas; and Ward Village® in Honolulu, Hawai'i. The Howard Hughes Corporation is traded on the New York Stock Exchange.