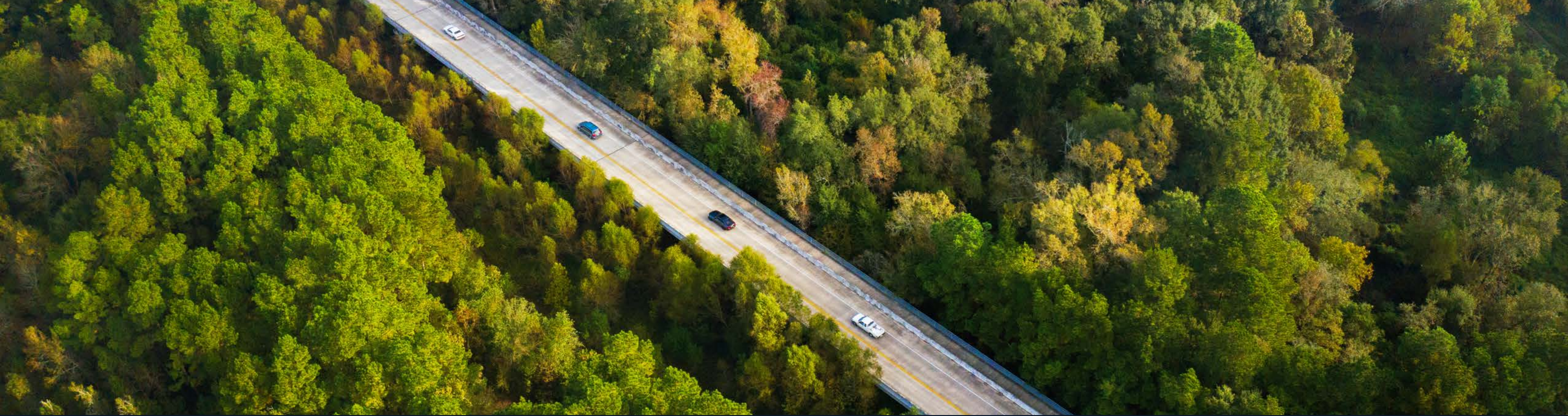




WOODLOCH FOREST DRIVE

The Woodlands®

Howard Hughes



UNMATCHED LOCATION IN THE WOODLANDS

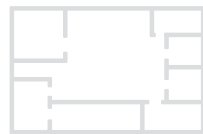
1400 Woodloch Forest Drive is a five-story office building in The Woodlands Town Center and is the first office building accessible from Interstate 45 on Woodlands Parkway.



PROPERTY FEATURES

Modern Renovated Lobby

Contemporary, updated finishes and design were completed in the lobby and exterior.



95,667 RSF

Five-story office building



I-45 Access

Conveniently located one minute from I-45 and 30 minutes north of Houston's Bush IAH



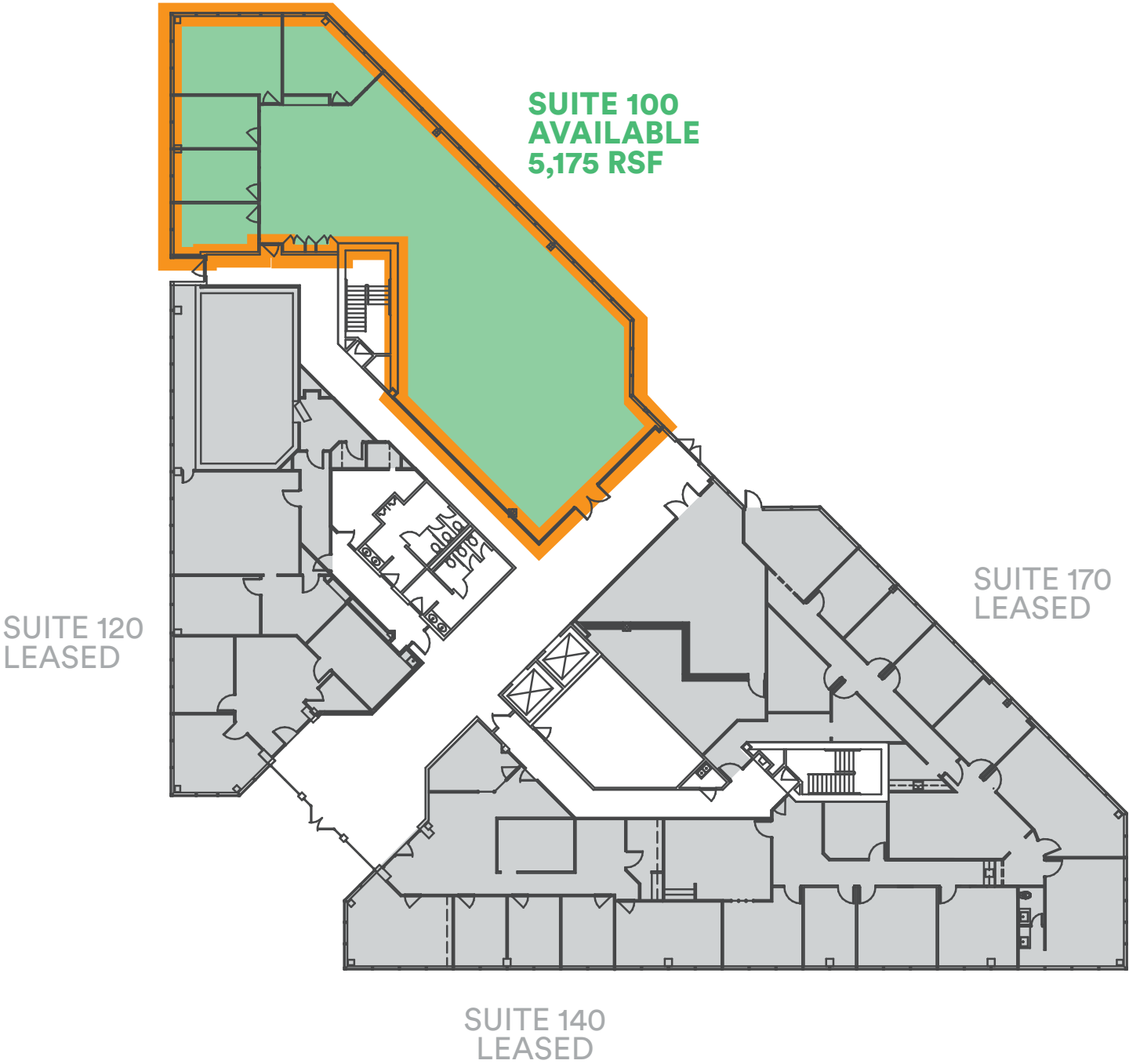
3.5/1,000 SF

Uncovered parking



The renovated lobby features an all-new, large central vestibule area, updated finish materials, including ceramic tile flooring and walls with modern lighting, hard ceilings and a digital directory.

FIRST FLOOR



SECOND FLOOR



FIFTH FLOOR





Located in The Woodlands Town Center

1400 Woodloch Forest Drive is located within walking distance of Waterway Square®, The Westin at The Woodlands, The Woodlands Waterway Marriott Hotel & Convention Center, The Woodlands Mall, Market Street and The Cynthia Woods Mitchell Pavilion (one of the top-rated outdoor amphitheaters in the U.S.).

645 HOTEL ROOMS

**2 MILLION SQ FT
OF SHOPPING & DINING**

**1,646 LUXURY
MULTIFAMILY UNITS**

Surrounding Amenities



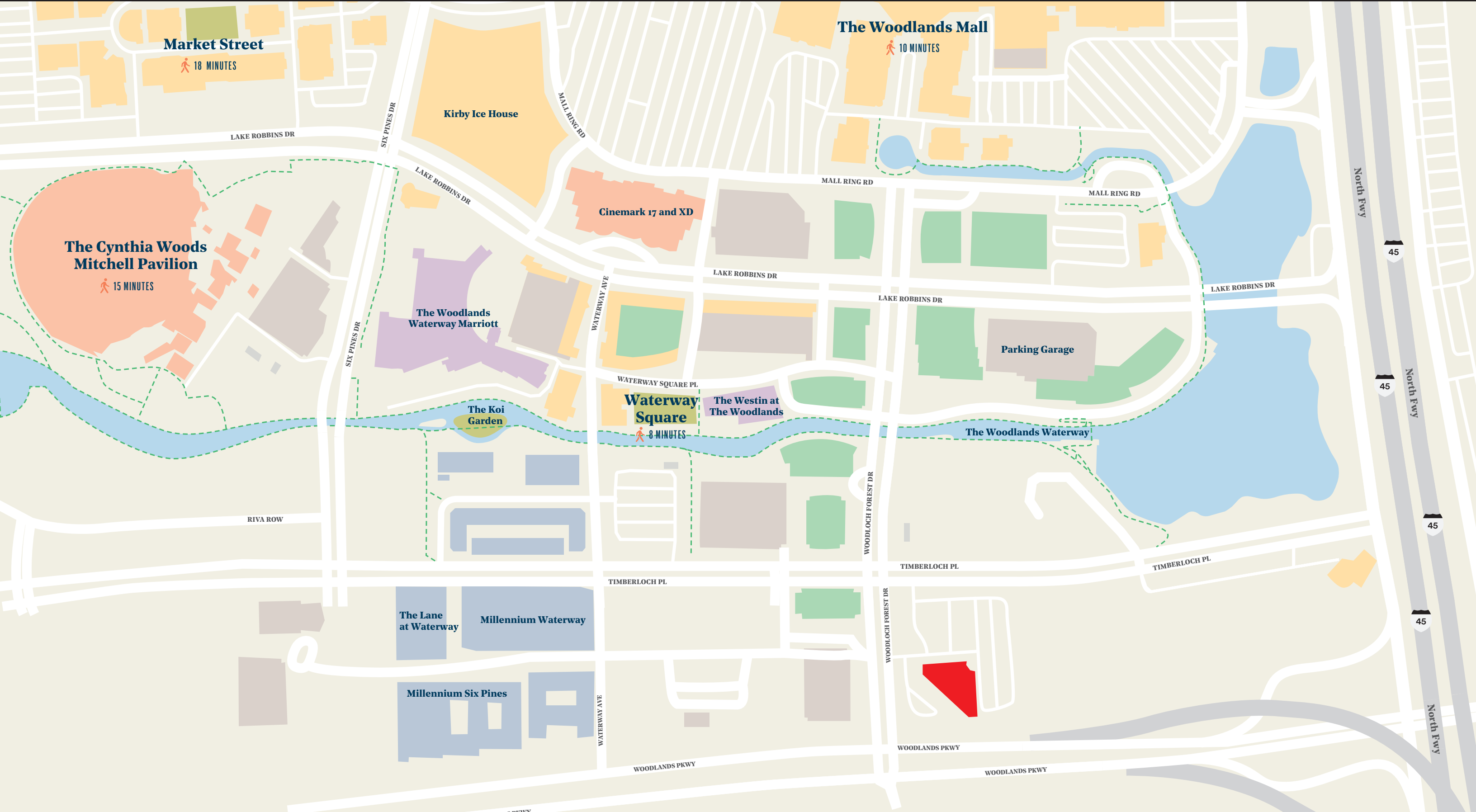
Entertainment
Hotel
Retail



Office
Residential
Hike & Bike Trail



Walking Distance



ACCESSIBILITY

Find modern flavors, world-class cuisine and local favorites within Town Center and plenty of options in between.

Walkable Dining Options

MARKET STREET



THE WOODLANDS MALL



WATERWAY SQUARE





Leasing

Visit [TheWoodlands.com](https://www.thewoodlands.com) for more leasing information and building specs.

Robert S. Parsley, SIOR

713.830.2121

bob.parsley@colliers.com

Norman V. Munoz

713.830.2136

norm.munoz@colliers.com

Jillian Fredericks

713.830.2133

jillian.fredericks@colliers.com

Howard Hughes

The Howard Hughes Corporation owns, manages and develops commercial, residential and mixed-use real estate throughout the U.S. Its award-winning assets include the country's preeminent portfolio of master planned communities, as well as operating properties and development opportunities including: the Seaport District in New York; Columbia, Maryland; The Woodlands®, Bridgeland® and The Woodlands Hills in the Greater Houston, Texas area; Summerlin®, Las Vegas; and Ward Village® in Honolulu, Hawai'i. The Howard Hughes Corporation is traded on the New York Stock Exchange.