

9303

NEW TRAILS DRIVE



The Woodlands®

Howard Hughes



9303 New Trails Drive is a four-story office building located near several prominent retail hubs and thoroughfares in The Woodlands.

PROPERTY FEATURES



97,964 RSF

Four-story office building



3.5/1,000 SF

Uncovered parking



BOMA 360 Certified

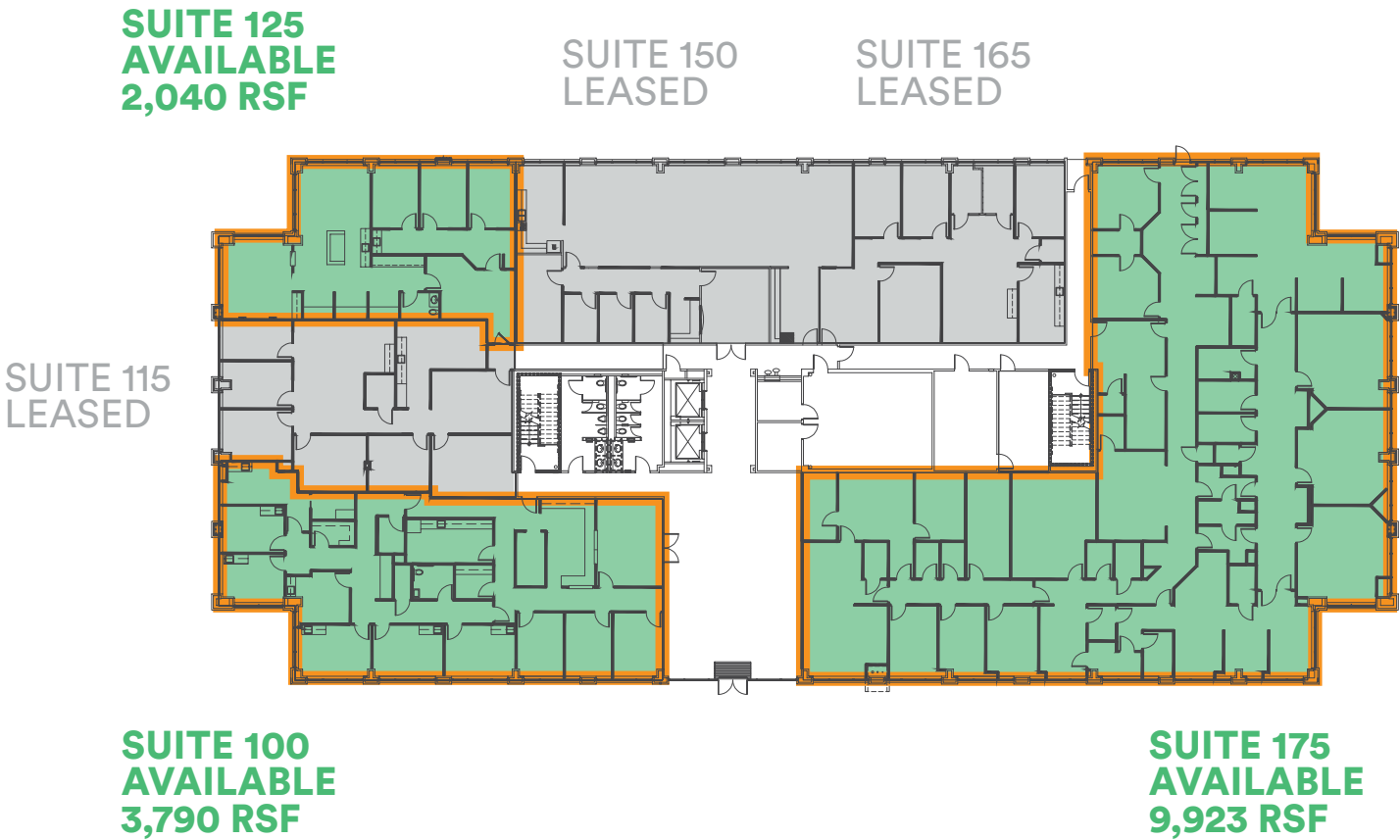


I-45 Access

Conveniently located to I-45 and
30 minutes north of Houston's Bush
Intercontinental Airport



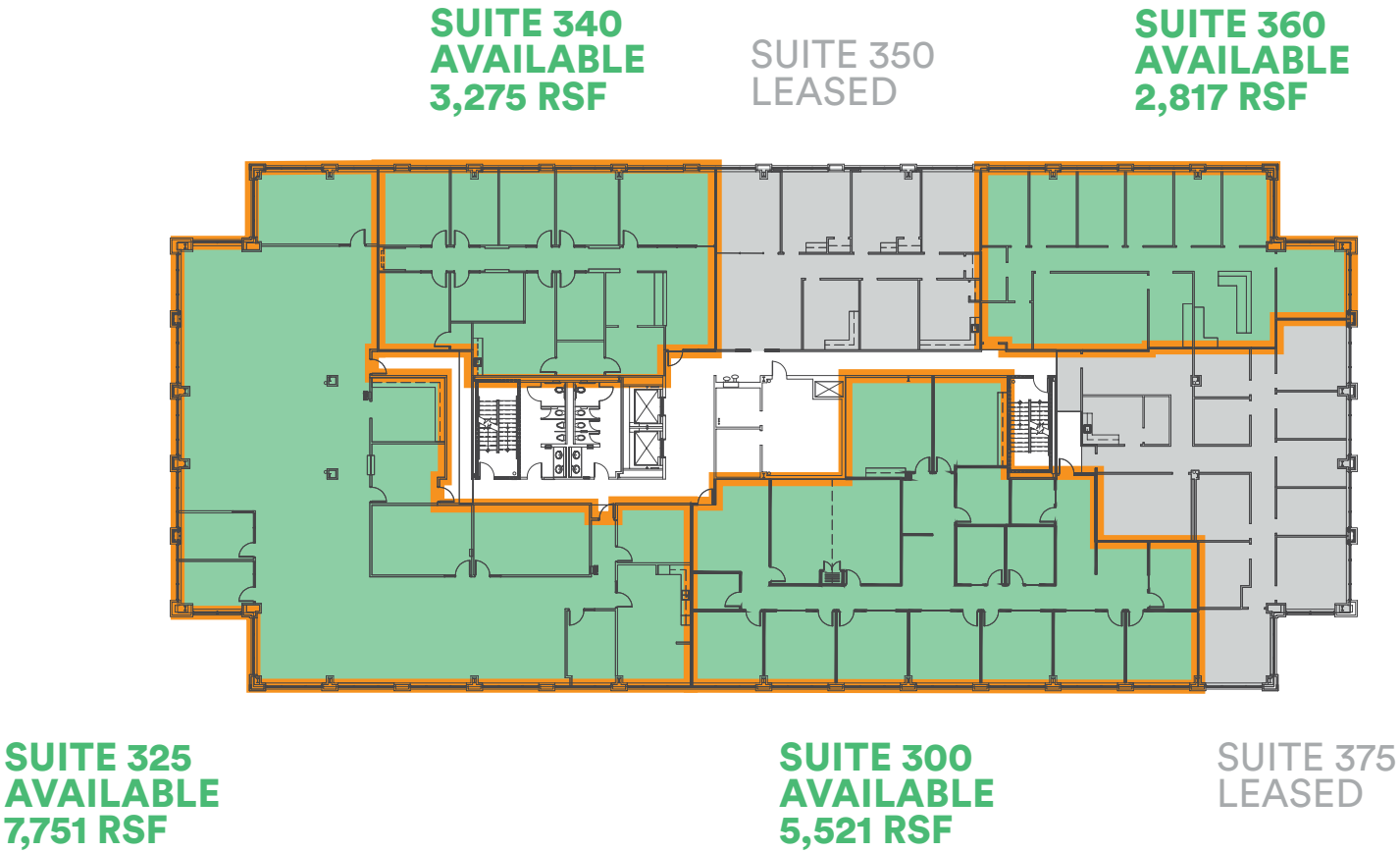
FIRST FLOOR



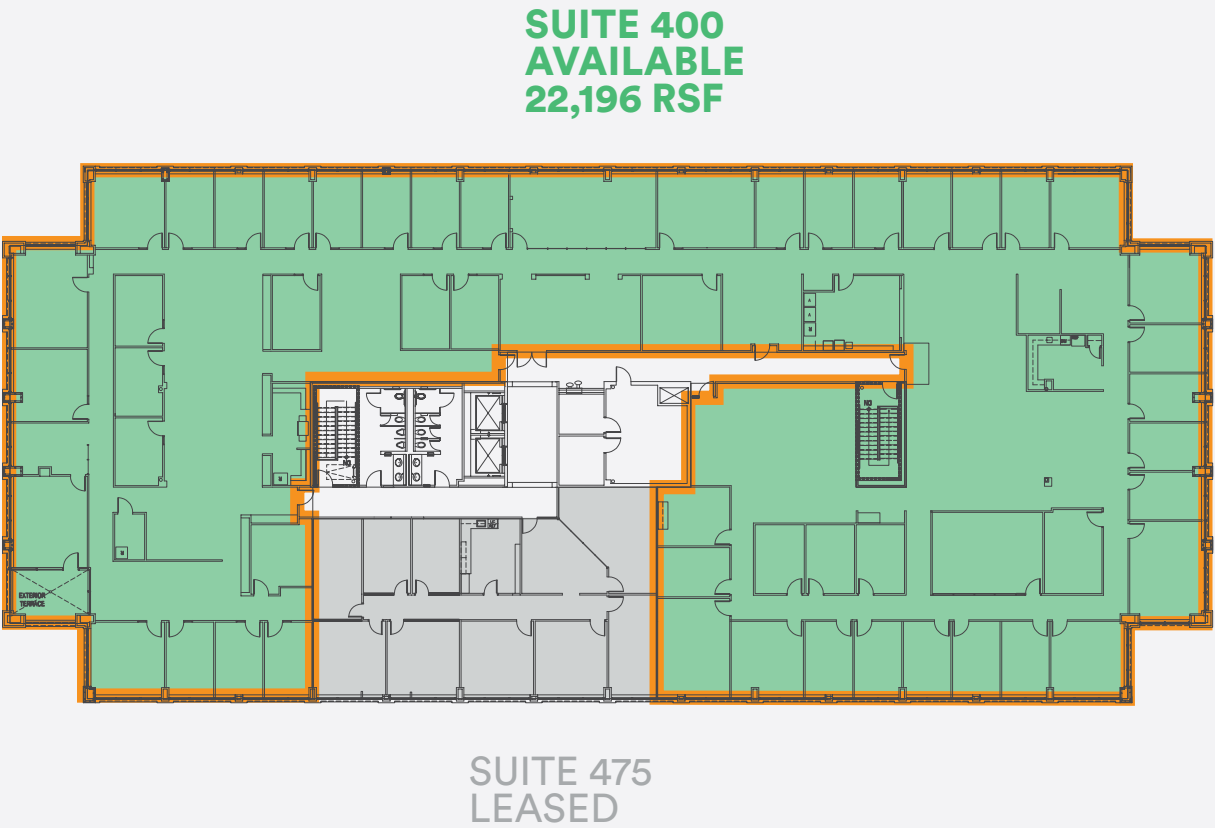
SECOND FLOOR



THIRD FLOOR



FOURTH FLOOR



AMENITIES



Proximity to Major Retail Hubs

9303 New Trails Drive is located within a mile of The Woodlands Town Center and includes Hughes Landing, Waterway Square®, The Westin at The Woodlands, The Woodlands Waterway Marriott Hotel & Convention Center, The Woodlands Mall, Market Street and The Cynthia Woods Mitchell Pavilion, one of the top-rated outdoor amphitheaters in the U.S.

645 HOTEL ROOMS

**2 MILLION SQ FT
OF SHOPPING & DINING**

**1,646 LUXURY
MULTIFAMILY UNITS**

ACCESSIBILITY

Dining & Retail Options

Find modern flavors, world-class cuisine and local favorites within Hughes Landing and plenty of options in between.

DINING


ITALIAN COASTAL CUISINE


DOUBLE EAGLE STEAKHOUSE


SEAFOOD • STEAK • CEBU HOUSE


EST. 1982


FINE TEX-MEX & TEQUILA






CHURRASCARIA



FROZEN DOG



KITCHEN & BAR








FITNESS





DANCE STUDIOS









SHOPPING AND SERVICES


FINE MEN'S SALONS




NAIL SPA







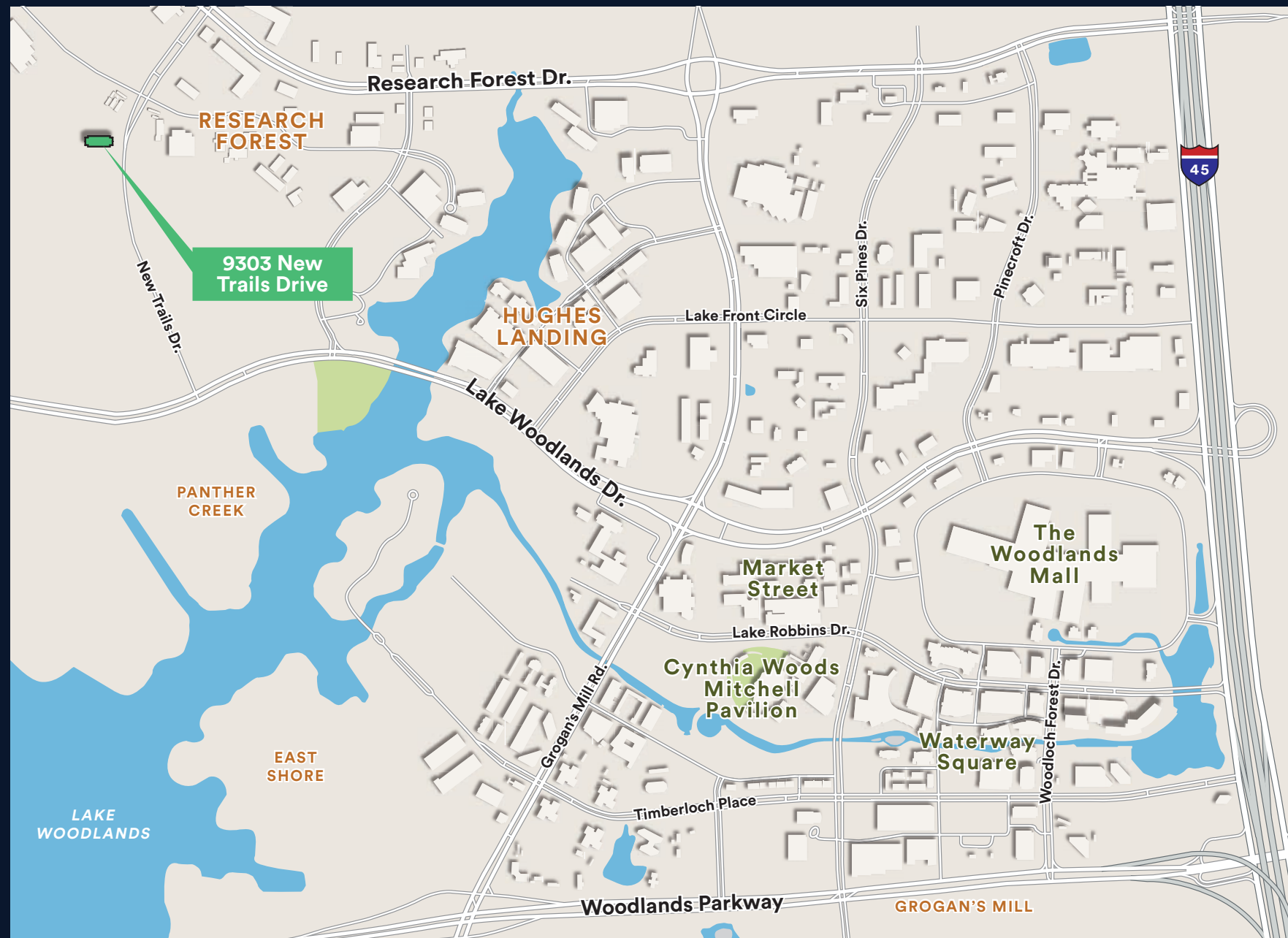








The Woodlands Town Center



NEW TRAILS DRIVE

Leasing

Robert S. Parsley, SIOR

713.830.2121

bob.parsley@colliers.com

Norman V. Munoz

713.830.2136

norm.munoz@colliers.com

Jillian Fredericks

713.830.2133

jillian.fredericks@colliers.com

Visit TheWoodlands.com for more leasing information and building specs.

Howard Hughes

The Howard Hughes Corporation owns, manages and develops commercial, residential and mixed-use real estate throughout the U.S. Its award-winning assets include the country's preeminent portfolio of master planned communities, as well as operating properties and development opportunities including: the Seaport District in New York; Columbia, Maryland; The Woodlands®, Bridgeland® and The Woodlands Hills in the Greater Houston, Texas area; Summerlin®, Las Vegas; and Ward Village® in Honolulu, Hawai'i. The Howard Hughes Corporation is traded on the New York Stock Exchange.